

Recreating a Simple Landscape Plan

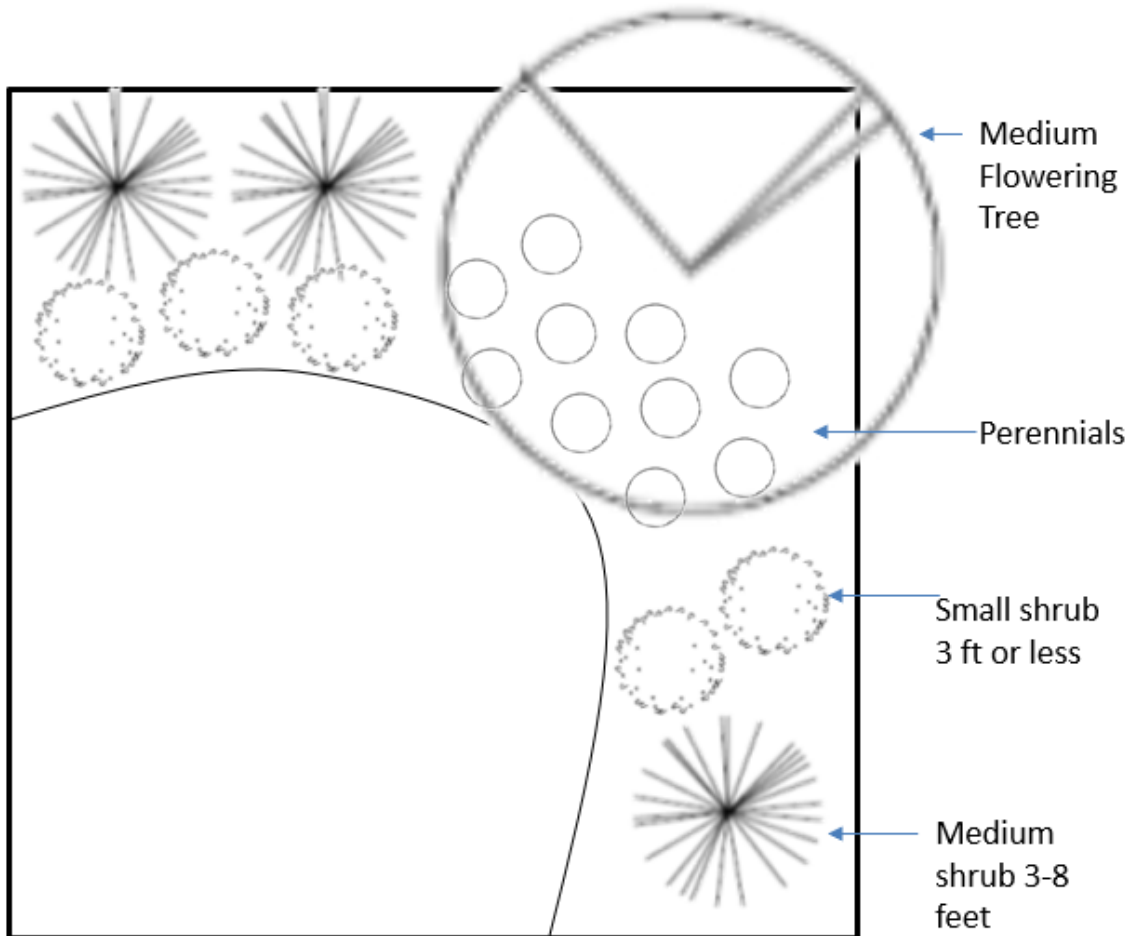
Drawing plans to scale can be tricky and takes practice. On a blank piece of paper, use your ruler to recreate this plan on your own paper.

Recommended steps to recreating your plan:

- ✓ Start by measuring and drawing the box surrounding the design
- ✓ Measure and place the tree first
- ✓ Next measure and place the medium shrubs – you will need to measure from the sides of your box as well as the distance to the tree to make sure you have them placed correctly
- ✓ Measure and place the remaining plant material following the same procedure of measuring from the sides of the box and from the already placed plant material
- ✓ Draw the curved bed line – you will need to measure several different points along the curved bed from the sides of the box, mark these measured points with a dot on your paper, connect the dots to form the curved bed line

Once you have your plan recreated

- ❖ Create a Plant Legend and select a plant that would fit the description given
 - Ex – Medium Flowering Tree could be a Flowering Dogwood
- ❖ Include the scale
- ❖ Include the North directional arrow in the direction you believe it should go
- ❖ Your name and class period will be the plan name



Planting Plan

Scale: 1" = 4 feet

This is a free resource provided by Georgia Agricultural Education